

shell+claw

York River Oyster and Crab Farm

*Public Hearing April 22nd at 1:00pm
York Public Library*

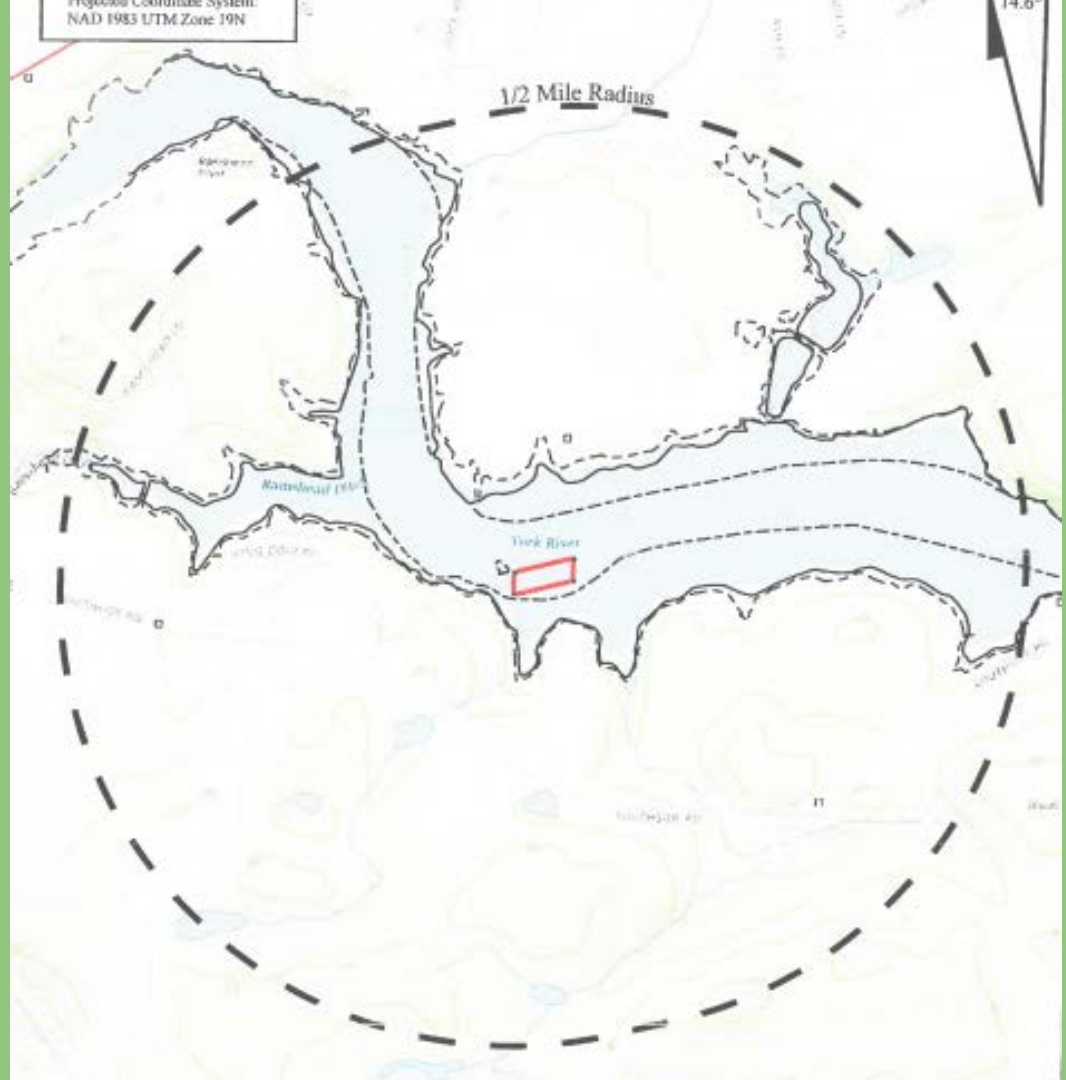
[Application](#)
[Site Report](#)





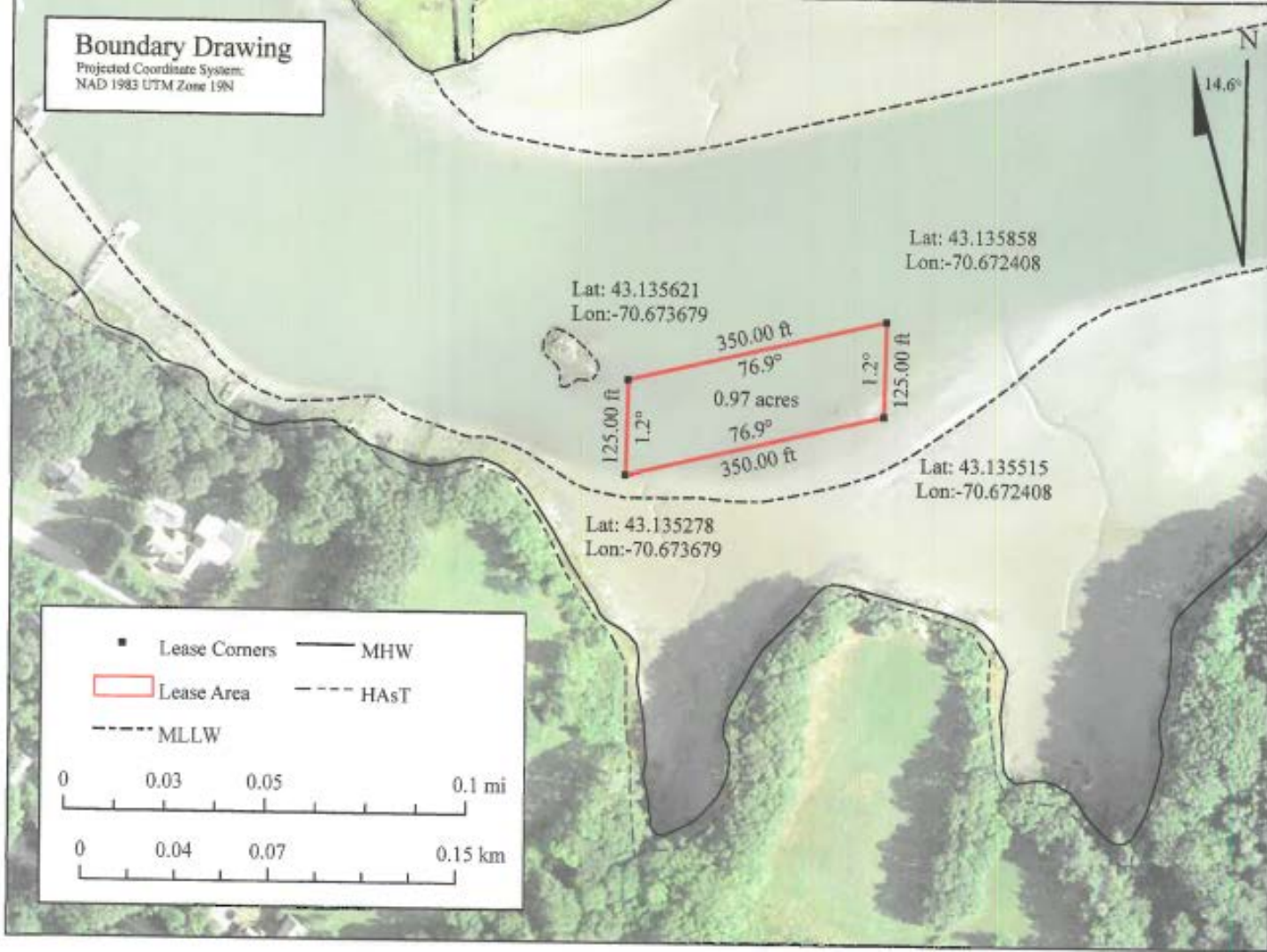
Projection Coordinate System:
NAD 1983 UTM Zone 19N

1/2 Mile Radius



Boundary Drawing

Projected Coordinate System:
NAD 1983 UTM Zone 19N



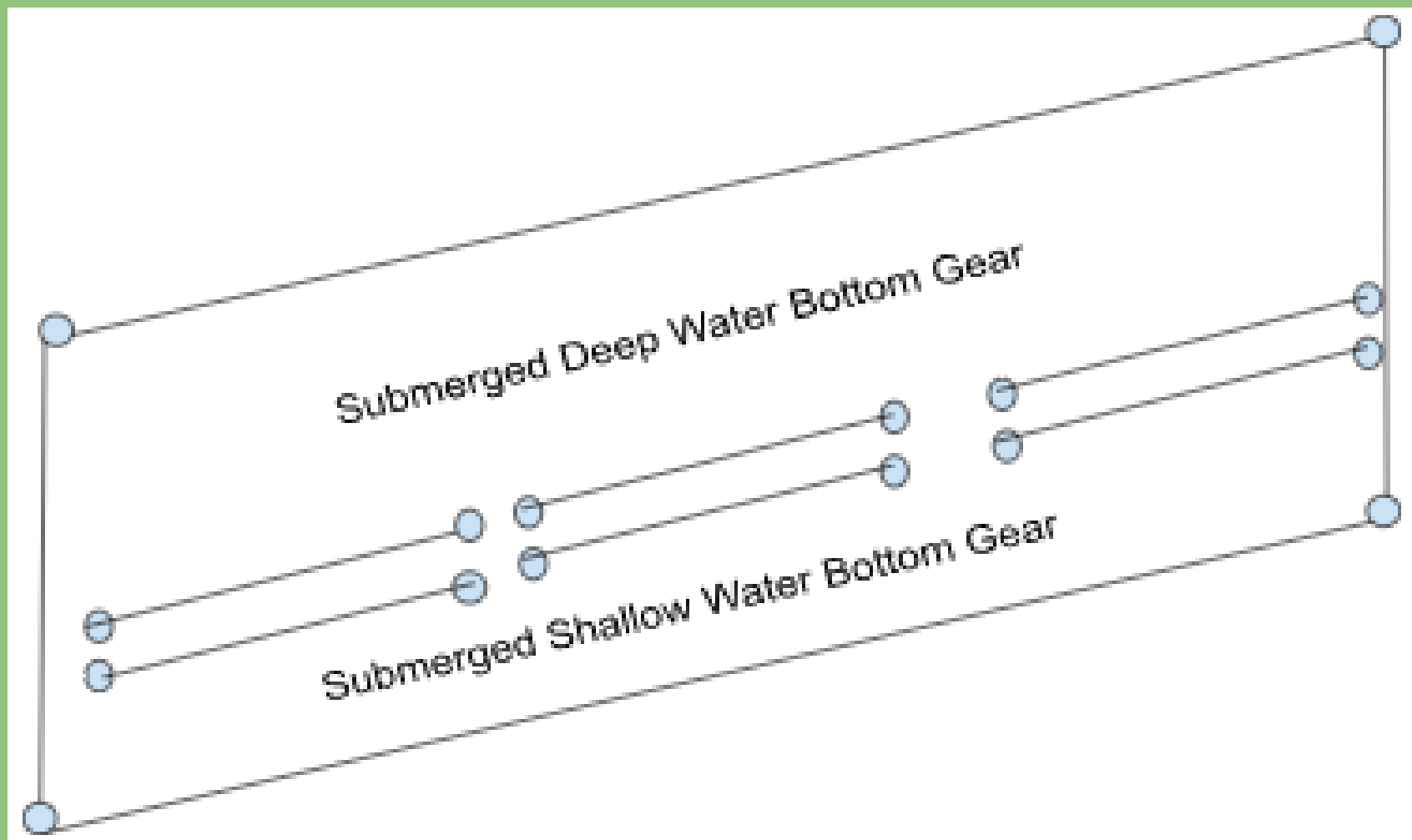
Decision Criteria

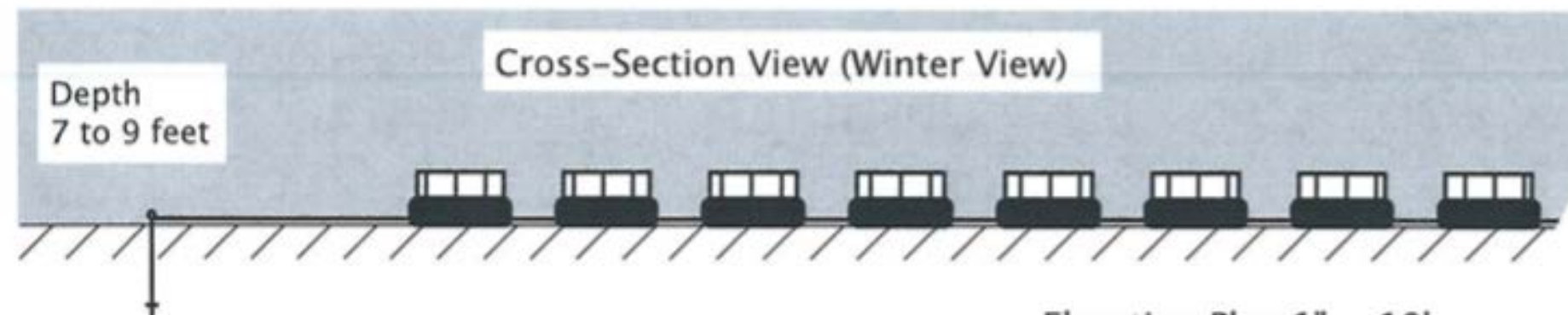
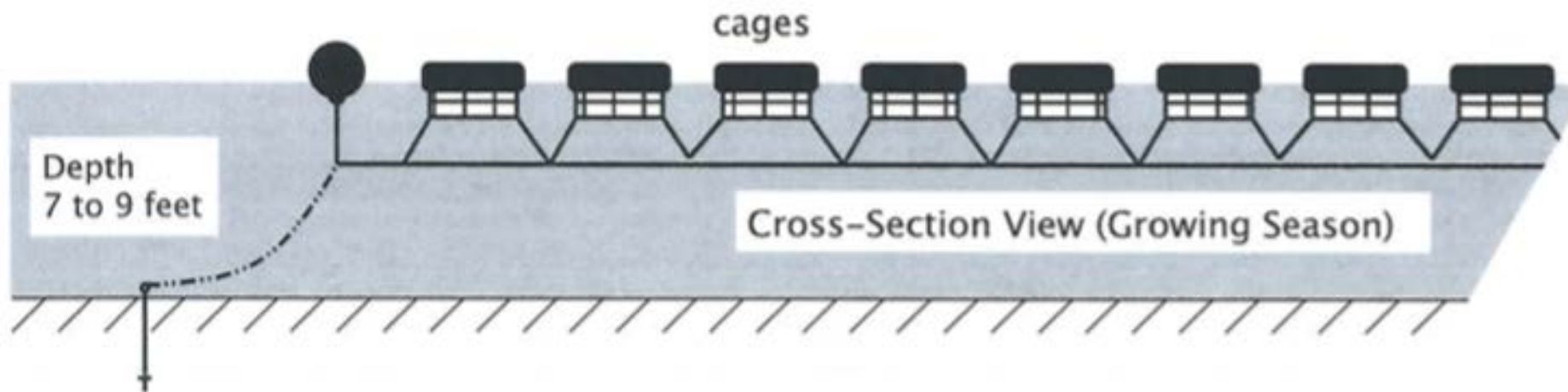
The lease must not unreasonably interfere with the:

1. Ingress or egress of riparian owners;
2. Navigation;
3. Fishing or other uses of the area;
4. Other aquaculture uses;
5. Ability of the site and surrounding areas to support ecologically significant flora and fauna;
6. Public use or enjoyment within 1000 ft of beaches parks or docks owned by local, state, or federal governments;

The applicant must demonstrate that there is an available source of organisms to be cultivated for the lease site.

Individuals looking to participate in the hearing must [register](#).





Bottom Planting or
Oyster Bags Only

The diagram shows a large rectangle divided into three sections. The left section is a blue-shaded rectangle labeled 'Bottom Planting or Oyster Bags Only'. The right section is divided into two horizontal bands. The upper band is labeled 'Submerged Deep Water Bottom Gear' and contains three parallel lines, each with a small circle at its right end. The lower band is labeled 'Submerged Shallow Water Bottom Gear' and contains three parallel lines, each with a small circle at its right end. The entire diagram is enclosed in a black border with small blue circles at the corners.

Submerged Deep Water Bottom Gear

Submerged Shallow Water Bottom Gear

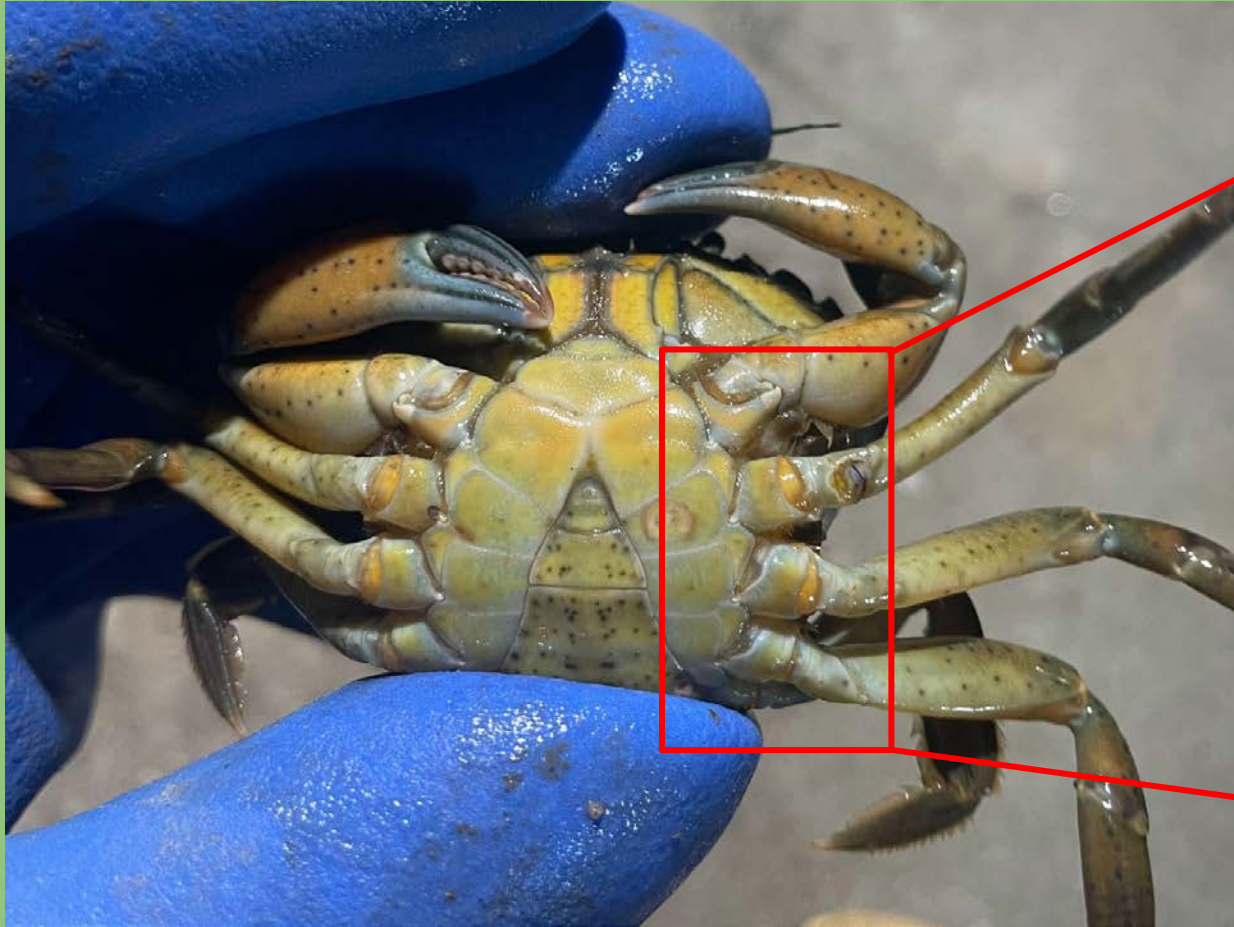
Soft-Shell Green Crab

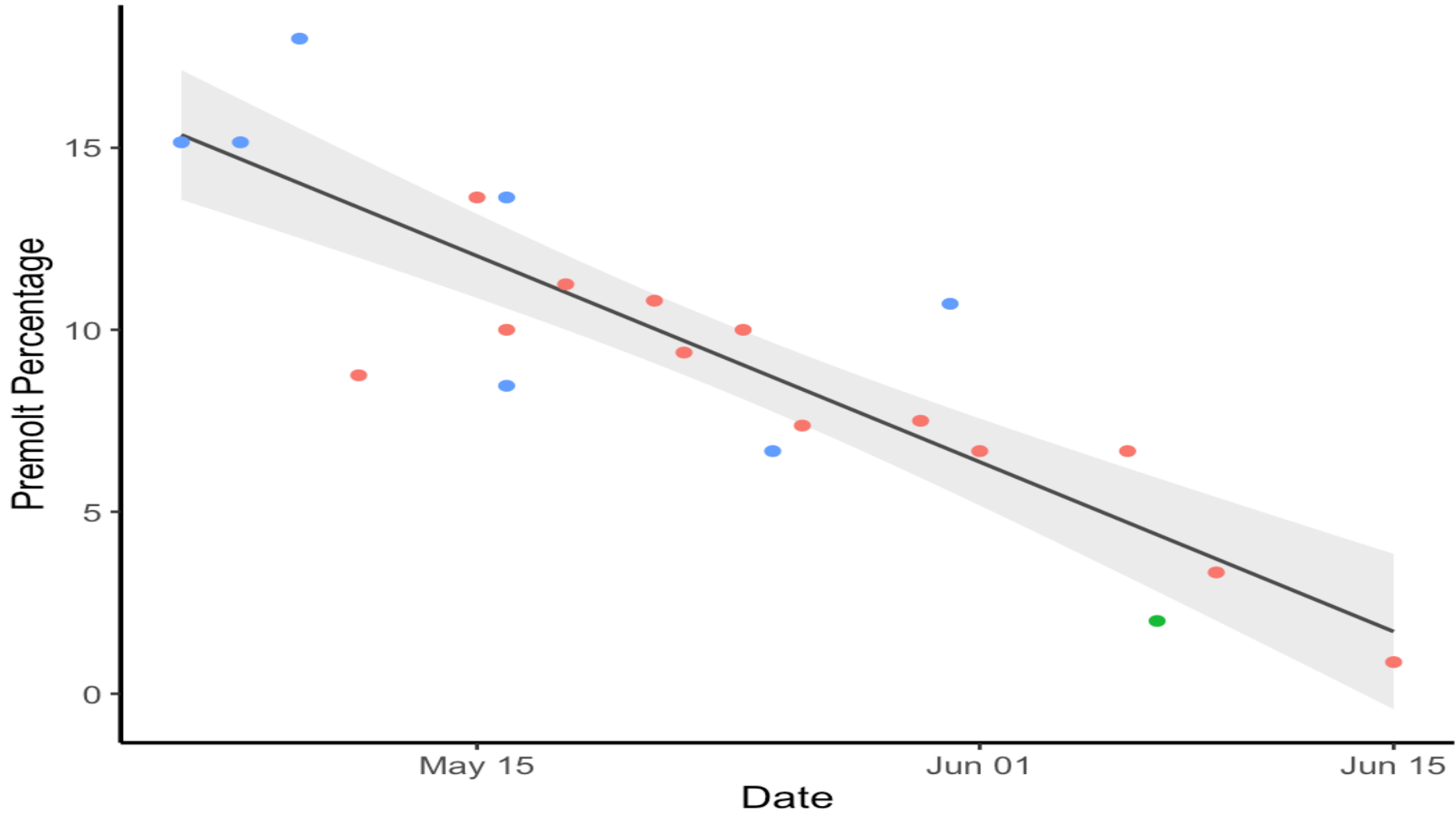


Fishing



Sorting Premolts





Pre-molts to the “Crab Farm”



live green crabs





Sorting
for
“Busters”

“Busters” into Crab Condos





Harvesting Soft-Shells

Watershed Stewardship Plan

- 2.7: Protect, enhance and restore high quality salt marsh habitats to preserve ecological function.
 - a. Monitor and control invasive species that are degrading salt marsh habitat.
- 2.9: Protect valuable wildlife and habitat by addressing invasive species in the watershed.
- 2.13: Maintain and improve water quality to support shellfish harvesting in the YR watershed.
 - a. Work in collaboration with YSC to consider opportunities for expanding shellfish harvesting in YR.
- 3.1: Promote and sustain activities that support commercial fishing operations and an active working waterfront.
 - a. Help maintain commercial fishing as a viable option for future generations and explore ways to diversity operations.

Anticipated Objection

1. Aesthetic objection
2. Hazard to Navigation and Paddle Craft
3. Interference with recreational fishing
4. Objection to commercial interests in the York River
5. Tidal Waterfowl and Wading Bird Habitat
6. Nuisant birds (cormorants)